

Classic ejectors series HV

Page 11-02



Classic ejectors series HF

Page 11-03



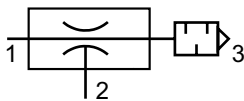
Series HV

Technical details

Temperature range	0°C ... +60°C
Medium	Filtered, oil-free and dried compressed air according to ISO 8573-1:2010, Class 7:2:4, instrument air, free of aggressive additives. Differing the pressure dew point must be at least 10°C below lowest occurring ambient temperature.
Materials	Body: Al (anodized), fittings: brass, nickel plated, silencer: plastic



Vacuum ejectors work according to the Venturi principle. The pressure and vacuum connection have an integrated filter which protects against large dirt particles. The granulate silencer is part of delivery. The HV series is developed for high vacuum level.



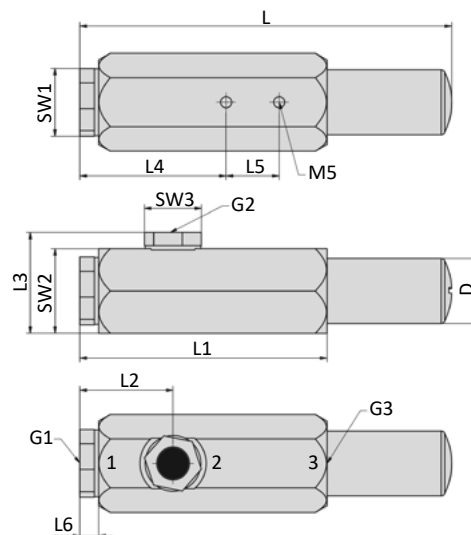
Technical data

Model-no.:	HV-33	HV-63	HV-93	HV-133	HV-333	HV-533
Max. vacuum level (%)	95	95	95	95	95	95
Flow rate (l/min)**	4	10	15	30	40	45
Air consumption (l/min)*	25	45	70	120	300	480
Time to evacuate (s/l)**	7.50	3.20	2.00	0.95	0.53	0.42
Nozzle-Ø (mm)	0.7	1.1	1.3	1.7	2.5	3.0
Operating pressure (bar)	4 ... 6	4 ... 6	4 ... 6	4 ... 6	4 ... 6	4 ... 6
Weight (kg)	0.052	0.131	0.131	0.242	0.368	0.385

* at 5 bar operating pressure

** at 70% vacuum level and 5 bar operating pressure

Dimensions



- 1 = pressure inlet
- 2 = vacuum inlet
- 3 = exhaust

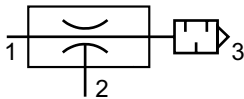
Model-no.:	L	L1	L2	L3	L4	L5	L6	SW1	SW2	SW3	G1	G2	G3	Ø D
HV-33	76	49.5	23.5	27.8	-	-	6.5	17	17	13	G1/8	G1/8	G1/8	15
HV-63	129.5	82.5	33.5	34.5	47	16	6.5	24	19	13	G1/4	G1/8	G3/8	24.5
HV-93	129.5	82.5	33.5	34.5	47	16	6.5	24	19	13	G1/4	G1/8	G3/8	24.5
HV-133	140	93	35	38	55	20	7	32	24	19	G1/4	G1/4	G1/2	24.5
HV-333	207	110	35	38.1	52	29	7	32	24	19	G1/4	G1/4	G3/4	48
HV-533	207	110	35	38.1	52	29	7	32	24	19	G1/4	G1/4	G3/4	48

Technical details

Temperature range	0°C ... +60°C
Medium	Filtered, oil-free and dried compressed air according to ISO 8573-1:2010, Class 7:2:4, instrument air, free of aggressive additives. Differing the pressure dew point must be at least 10°C below lowest occurring ambient temperature.
Materials	Body: Al (anodized), fittings: brass, nickel plated, silencer: plastic



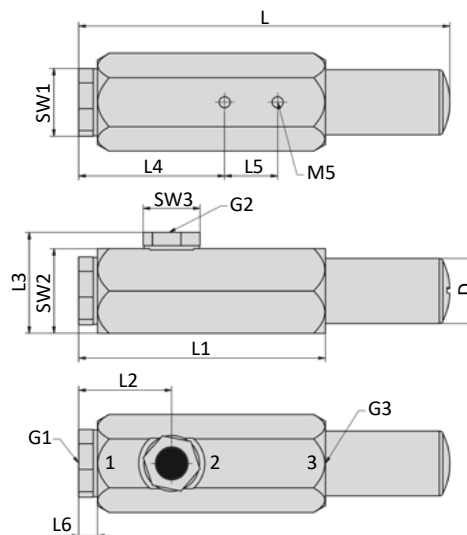
Vacuum ejectors work according to the Venturi principle. The pressure and vacuum connection have an integrated filter which protects against large dirt particles. The granulate silencer is part of delivery. The HF series is developed for high flow rates.


Technical data

Model-no.:	HF-133	HF-333	HF-533
Max. vacuum level (%)	60	65	80
Flow rate (l/min)**	80	190	215
Air consumption (l/min)*	110	300	480
Time to evacuate (s/l)**	0.22	0.12	0.09
Nozzle-Ø (mm)	1.7	2.5	3.0
Operating pressure (bar)	4 ... 6	4 ... 6	4 ... 6
Weight (kg)	0.242	0.368	0.385

* at 5 bar operating pressure

** at 40% vacuum level and 5 bar operating pressure

Dimensions


- 1 = pressure inlet
- 2 = vacuum inlet
- 3 = exhaust

Model-no.:	L	L1	L2	L3	L4	L5	L6	SW1	SW2	SW3	G1	G2	G3	Ø D
HF-133	140	93	35	38	55	20	7	32	24	19	G1/4	G1/4	G1/2	24.5
HF-333	207	110	35	38.1	52	29	7	32	24	19	G1/4	G1/4	G3/4	48
HF-533	207	110	35	38.1	52	29	7	32	24	19	G1/4	G1/4	G3/4	48