

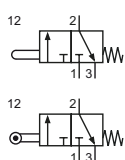
## Technical details

Connection	G1/8
Nominal size	4 mm
Temperature range	-10°C ... +70°C (-10°C...+60°C for use in ATEX areas)
Medium	Filtered, oil-free and dried compressed air according to ISO 8573-1:2010, Class 7:2:4, instrument air, free of aggressive additives. Differing the pressure dew point must be at least 10°C below lowest occurring ambient temperature.
Materials	Body: Al (anodized), seals: NBR, inner parts: Al, stainless steel and brass, stem, lever: stainless steel, roller: plastic
	Products without their own potential ignition source in accordance with Directive 2014/34/EU, suitable for use in hazardous areas.



Mechanically operated seat valve.

## 3/2-way-valves



E-28-310  
3/2-way, mechanical spring return,  
stem operated

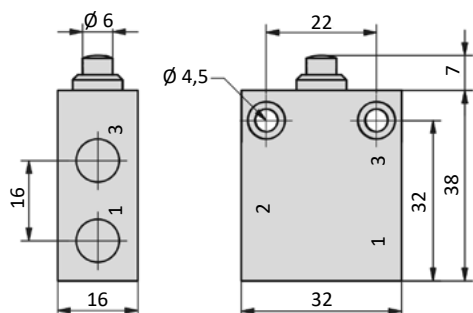
ER-28-310  
3/2-way, mechanical spring return,  
roller operated

## Technical data

Model-no.:	E-28-310	ER-28-310
Operating pressure (bar)	0 ... 12	0 ... 12
Flow rate (NI/min)	210	210
Actuating force at 6 bar (N)	16	9
Pre-stroke (mm)	1	2
Actuation stroke (mm)	1	1
Pre actuation stroke (mm)	2	2
Weight (kg)	0.053	0.063

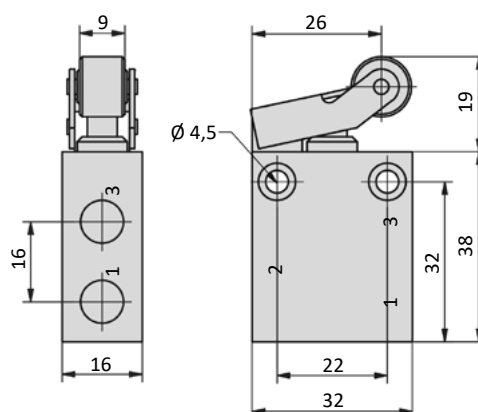
## Dimensions

E-28-310



1 = pressure inlet  
2 = outlet  
3 = exhaust

ER-28-310





## Valves

Mechanically or pneumatically operated

### Mechanically operated valves

#### Explosion-proof equipment without inherent potential ignition sources

The valves **E-28-**, **ER-28-** do not fall into the scope of the EU Directive 2014/34/EC. They are not subjected by Article 1 (2) and (3) of Directive 2014/34/EC. It has been proven by an ignition risk analysis that the valves have no potential ignition source of their own. They can be used in compliance with the requirements of e.g. DIN EN 1127-1:2019, DIN EN IEC 60079-0:2019, DIN EN ISO 80079-36:2016 and DIN EN ISO 80079-37:2016 in

Zone 1 explosion groups IIA, IIB and IIC, Zone 21 explosion groups IIIA, IIIB and IIIC  
Zone 2 explosion groups IIA, IIB and IIC, Zone 22 explosion groups IIIA, IIIB and IIIC

The valves are not marked within the meaning of the ATEX Directive. They have to meet the requirements of the existing zones.



The operating instructions for the valve must be taken into account before putting into operation. These are included with each valve and are available at [www.airtec.de](http://www.airtec.de).