

**Technical details**

<b>Temperature range</b>	-10°C ... +50°C
<b>Medium</b>	Filtered, oil-free and dried compressed air according to ISO 8573-1:2010, Class 7:2:4, instrument air, free of aggressive additives. Alternatively the pressure dew point must be at least 10°C below lowest occurring ambient temperature.
<b>Materials</b>	Body: Al (anodized), seals: NBR
<b>Protection</b>	IP 65 according to EN 60529



Manifold system with integrated electrical connection including LED indicators, manual override and built-in circuit protection. Valves with connection G1/4 require 2 stations on the manifold. The above order code covers only the manifold. The multi-pin plug with cable must be ordered separately. The valve terminal is delivered pre-assembled and function-tested. If not specified with the order, valve configuration is as follows: Valves are mounted according to their order number, starting with high numbers at the side of the multi-pin, ending with low numbers on the opposite side, followed by blind plates (if ordered).

**Order code**

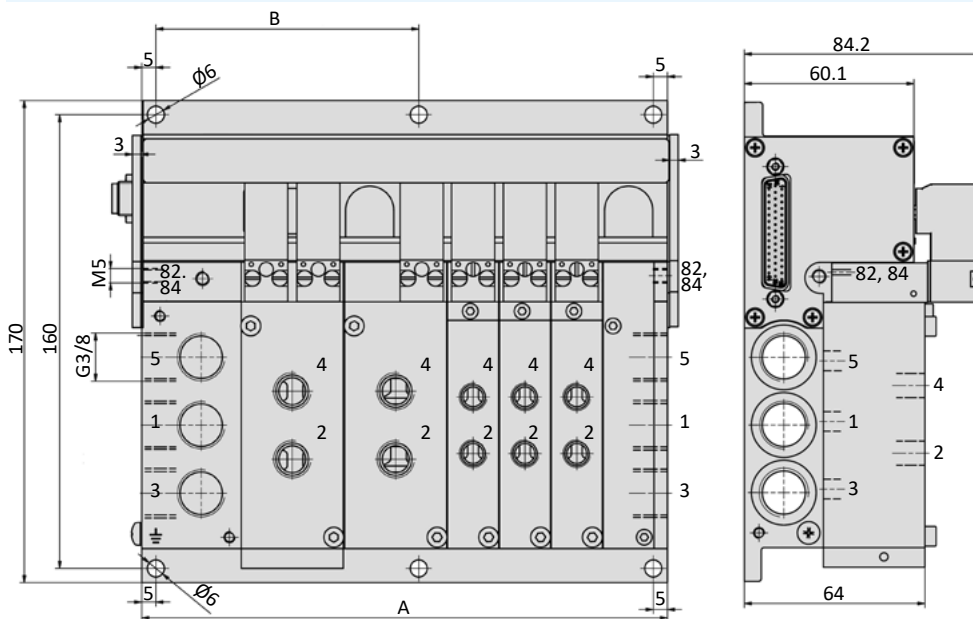
Series		Electrical options	
<p style="text-align: center;"><b>RE-19/**-***</b></p>		M-1	Multi-pin
<p>Number of stations</p>		AS3	AS-Interface (only for 4, 8 and 12 stations)
04	4 stations		
06	6 stations		
08	8 stations		
10	10 stations		
12	12 stations		
14	14 stations		
16	16 stations		
18	18 stations		
20	20 stations		
22	22 stations		



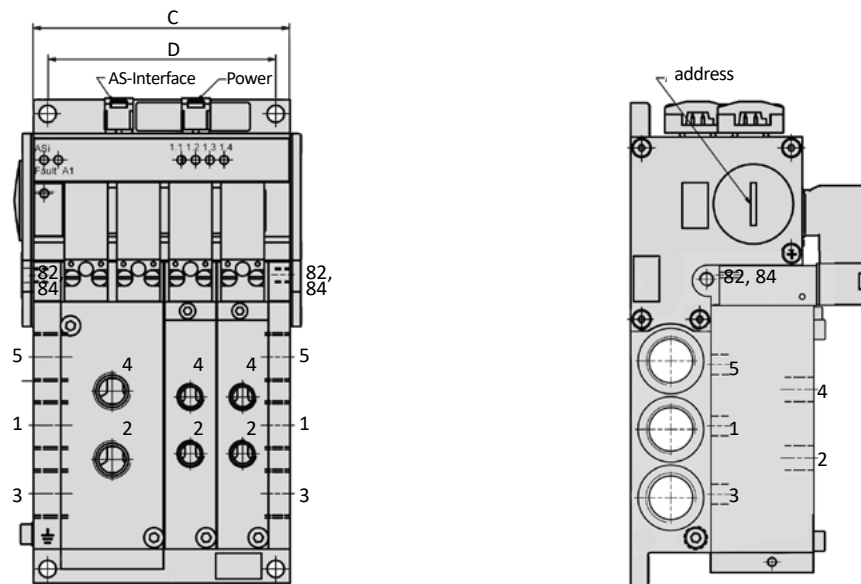
More detailed information about the installation you find in the manual at [www.airtec.de](http://www.airtec.de).

## Dimensions

### Multi-pin



### AS-Interface



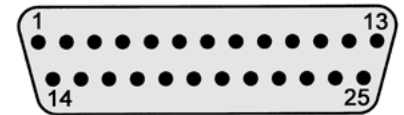
Model-no.:	A	B	Weight without valves (kg)
RE-19/04-M-1	113	-	0.93
RE-19/06-M-1	149	-	1.26
RE-19/08-M-1	186	-	1.59
RE-19/10-M-1	222	-	1.92
RE-19/12-M-1	259	129.5	2.25
RE-19/14-M-1	295	147.5	2.58
RE-19/16-M-1	332	166	2.91
RE-19/18-M-1	369	184.5	3.24
RE-19/20-M-1	405	202.5	3.57
RE-19/22-M-1	442	221	3.90

Model-no.:	C	D	Weight without valves (kg)
RE-19/04-AS3	96	80	0.82
RE-19/08-AS3	165	155	1.48
RE-19/12-AS3	228	238	2.14

**Electrical options**
**Multi-pin**





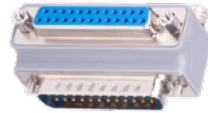
The 25-pin multi plug (see page 7-07) has to be ordered separately.

Pin	Function	Wire colour	Pin	Function	Wire colour
1	valve 1	white	14	valve 14	brown/ green
2	valve 2	brown	15	valve 15	white/ yellow
3	valve 3	green	16	valve 16	yellow/ brown
4	valve 4	yellow	17	valve 17	white/ grey
5	valve 5	grey	18	valve 18	grey/ brown
6	valve 6	pink	19	valve 19	white/ pink
7	valve 7	blue	20	valve 20	pink/ brown
8	valve 8	red	21	valve 21	white/ blue
9	valve 9	black	22	valve 22	brown/ blue
10	valve 10	violet	23	GND	white/ red
11	valve 11	grey/ pink	24	GND	brown/ red
12	valve 12	red/ blue	25	GND	white/ black
13	valve 13	white/ green			


**AS-Interface**

<b>Bus connector</b>	AS-Interface connector
<b>Power connector</b>	AS-Interface connector
<b>Bus-Voltage</b>	18.5 ... 31.6 V DC
<b>Power-Voltage</b>	24 V DC $\pm$ 10%
<b>Address selection</b>	Each IC slave (max. 4 valves) 1 programming socket = 1 address


**Accessories**

<b>Model-no.:</b>	RE-19-DT	<b>Model-no.:</b>	28-ST-68-M-xxx
	Pressure dividing plug		25-pin multi plug, straight
<b>Model-no.:</b>	RE-19-V-EP	xxx = 105	5 m cable
	Blind plate	xxx = 110	10 m cable
<b>Model-no.:</b>	RE-19-V-EP-01	<b>Model-no.:</b>	28-ST-M25-12-ADA-01
	Blind plate		Elbow 90°, Multi-pin-D-Sub, 25-pins

# Series RE-19

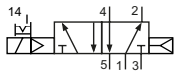
## Technical details

<b>Outlets</b>	G1/8, G1/4
<b>Temperature range</b>	-10°C ... +50°C
<b>Medium</b>	Filtered, oil-free and dried compressed air according to ISO 8573-1:2010, Class 7:2:4, instrument air, free of aggressive additives. Alternatively the pressure dew point must be at least 10°C below lowest occurring ambient temperature.
<b>Materials</b>	Body: Al (anodized), seals: NBR, inner parts: Al, stainless steel and brass
<b>Nominal voltage</b>	24 V DC, ± 10%
<b>Power consumption</b>	1 W
<b>Protection</b>	IP 65 according to EN 60529

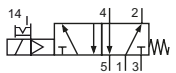


Electrically operated pool valve. The manual override is non-detent or detent and is operated by bolt or screw driver.

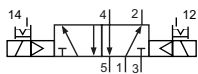
### 5/2-way-valves



KF-09-510-HNx-442  
KF-10-510-HNx-442  
5/2-way, single solenoid, air spring return

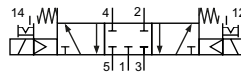


KF-09-511-HNx-442  
KF-10-511-HNx-442  
5/2-way, single solenoid, mechanical spring return

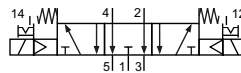


KF-10-520-HNx-442  
5/2-way, double solenoid

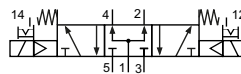
### 5/3-way-valves



KF-10-530-HNx-442  
5/3-way, center position closed



KF-10-533-HNx-442  
5/3-way, center position exhausted



KF-10-534-HNx-442  
5/3-way, center position pressurized

Please complete: x = manual override ( R = detent, T = non-detent)

## Technical data

Model-no.:	KF-09-510-HNx-442	KF-09-511-HNx-442	KF-10-510-HNx-442	KF-10-511-HNx-442
<b>Required space</b>	1 station	1 station	2 stations	2 stations
<b>Outlets</b>	G1/8	G1/8	G1/4	G1/4
<b>Operating pressure (bar)</b>	3...8	3...8	2.5...8	2.5...8
<b>Pilot pressure (bar)</b>	3...8	3...8	2.5...8	2.5...8
<b>Nominal size (mm)</b>	6	6	9	9
<b>Flow rate (NI/min)</b>	950	810	2100	1800
<b>Response time (ms) at 6 bar</b>	on: 11 off: 20	on: 10 off: 26	on: 13 off: 26	on: 18 off: 29
<b>Weight (kg)</b>	0.200	0.200	0.370	0.370

Model-no.:	KF-10-520-HNx-442	KF-10-530-HNx-442	KF-10-533-HNx-442	KF-10-534-HNx-442
<b>Required space</b>	2 stations	2 stations	2 stations	2 stations
<b>Outlets</b>	G1/4	G1/4	G1/4	G1/4
<b>Operating pressure (bar)</b>	2.5...8	3...8	3...8	3...8
<b>Pilot pressure (bar)</b>	2.5...8	3...8	3...8	3...8
<b>Nominal size (mm)</b>	9	9	9	9
<b>Flow rate (NI/min)</b>	2100	1500	1500	1500
<b>Response time (ms) at 6 bar</b>	on: 16 off: 16	on: 16 off: 26	on: 16 off: 26	on: 16 off: 26
<b>Weight (kg)</b>	0.430	0.430	0.430	0.430

Please complete: x = manual override ( R = detent, T = non-detent)